

NH SWIMMING BEACHES AT A GLANCE

Seeley Beach on Phillips Pond



29 Hazen Drive, Concord, New Hampshire 03301 • (603) 271-3503 • www.des.nh.gov

To protect the public from possible illness while swimming, each summer the NH Beach Program monitors water from 193 beaches for fecal bacteria. When fecal bacteria levels exceed state standards, harmful organisms are likely growing in the water making the water unsafe for swimming. When fecal bacteria levels are high, DES issues an advisory and performs daily sampling at the beach. Once the bacteria levels no longer exceed state standards, the advisory is removed.

Beaches display green signs to let the public know their water is tested regularly for bacteria. Past results and other details about participating beaches are available online or by contacting the NH Beach Program.

When bacteria results exceed standards, yellow signs are displayed at beach entry points and alerts are posted on the DES website. Advisories DO NOT close a beach. The decision to close a beach is left with the beach owner.

MONITORED

From Memorial Day to Labor Day the water at this beach is routinely tested for the presence of fecal bacteria

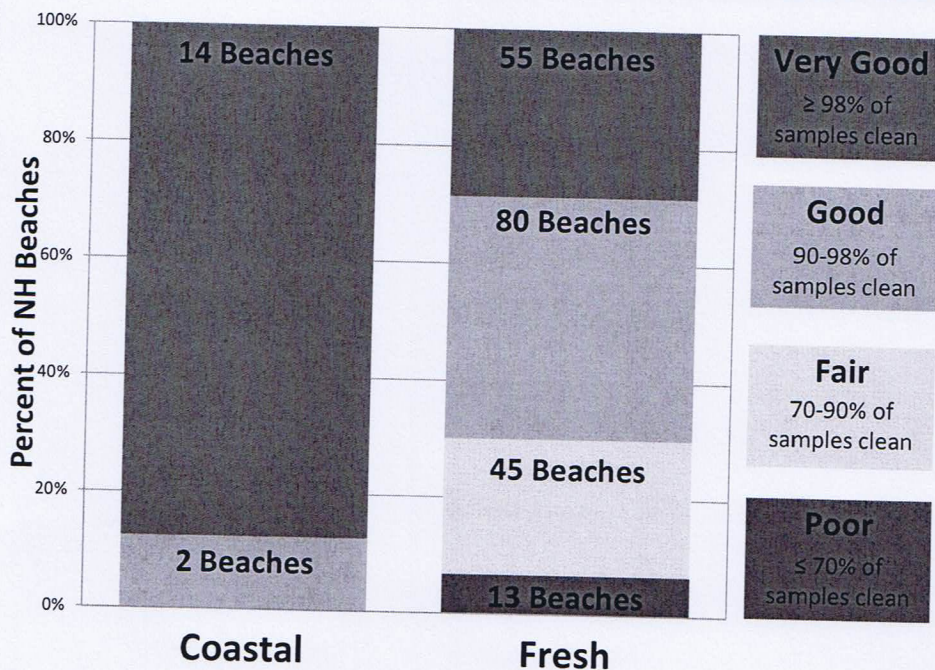
**THE MOST RECENT
SAMPLES ANALYZED MEET
STATUTORY BACTERIA
STANDARDS FOR BEACHES**

ADVISORY

High levels of BACTERIA have been detected in this WATER.
N.H. Dept. of Environmental Services

**WATER CURRENTLY NOT
SUITABLE FOR WADING
OR SWIMMING!**

Assessment of NH beaches: Water Sampling



Seeley Town Beach on Phillips Pond

VERY GOOD
99% of samples clean

Location: Sandown

Visits scheduled each summer: 3

Samples taken since 2003: 85

Unclean Samples: 1

Advisories from 2003-2013: 2

Average length of advisory

2003-2013: 7.5 days

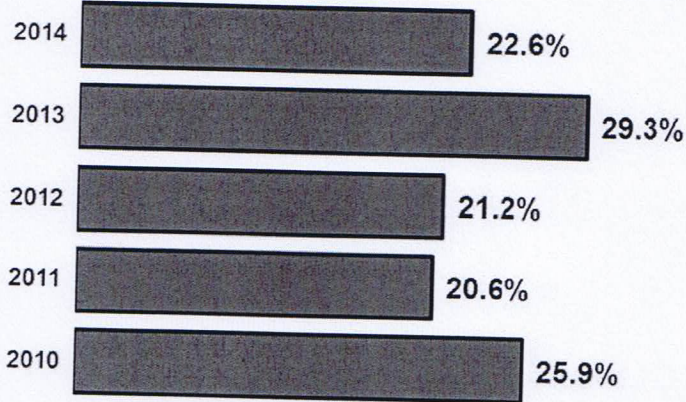
Advisories in 2014: 1

Days per advisory 2014: 7 days

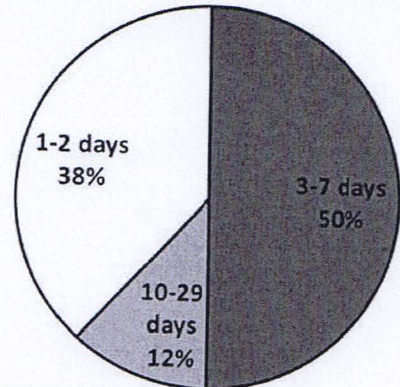
How clean are New Hampshire Beaches? For each beach the number of clean samples was compared to the total number of samples tested to generate an assessment of beach cleanliness. During the summer, most freshwater beaches are sampled once a month while most coastal beaches are sampled twice a week. All coastal beaches and two-thirds of freshwater beaches fall into the Good or Very Good category.

Statewide Beach Results

Beaches with one or more advisories in a summer



Length of 2014 Beach Advisories

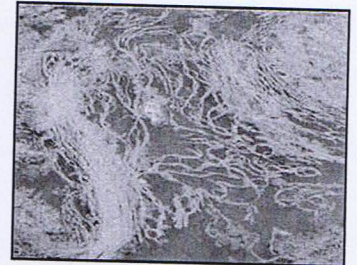


During the past 5 years, about one-fourth of all NH beaches have had at least one advisory in the summer months. Although 47 beaches had advisories in 2014, samples from 137 beaches were all clean this past summer.

Half of all advisories lasted between 3 days to a week. Only 12% (8 advisories) lasted longer than 10 days. Compared to 2013 when 89 advisories were issued, fewer advisories overall were issued in 2014 (68 advisories).

Avoid SLIME at the beach!

If you see green or blue-green clouds, clumps or slime in the water, stay out! Caused by excess nutrients from fertilizer, stormwater or animal feces, what looks like "slime" could be cyanobacteria. In large amounts, cyanobacteria can produce toxins harmful to animals and humans. The beach program posts advisories to warn swimmers of potential problems. Contact the Beach Program to report a sighting.

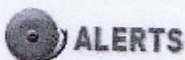


Stay connected with the Beach Program

Current advisories posted at

www.des.nh.gov.

At left, click on:



Beach Advisory

Subscribe to our newsletter.

Select "Beach Advisories" at:

<http://des.nh.gov/media/enews/index.htm>



Follow us on Twitter

@NHDES_Beaches

http://twitter.com/NHDES_Beaches



Questions about beaches and sampling can be directed to:

Sonya Carlson, Beach Program Coordinator, (603) 271-0698, beaches@des.nh.gov