

Map 1

Land Use 2015

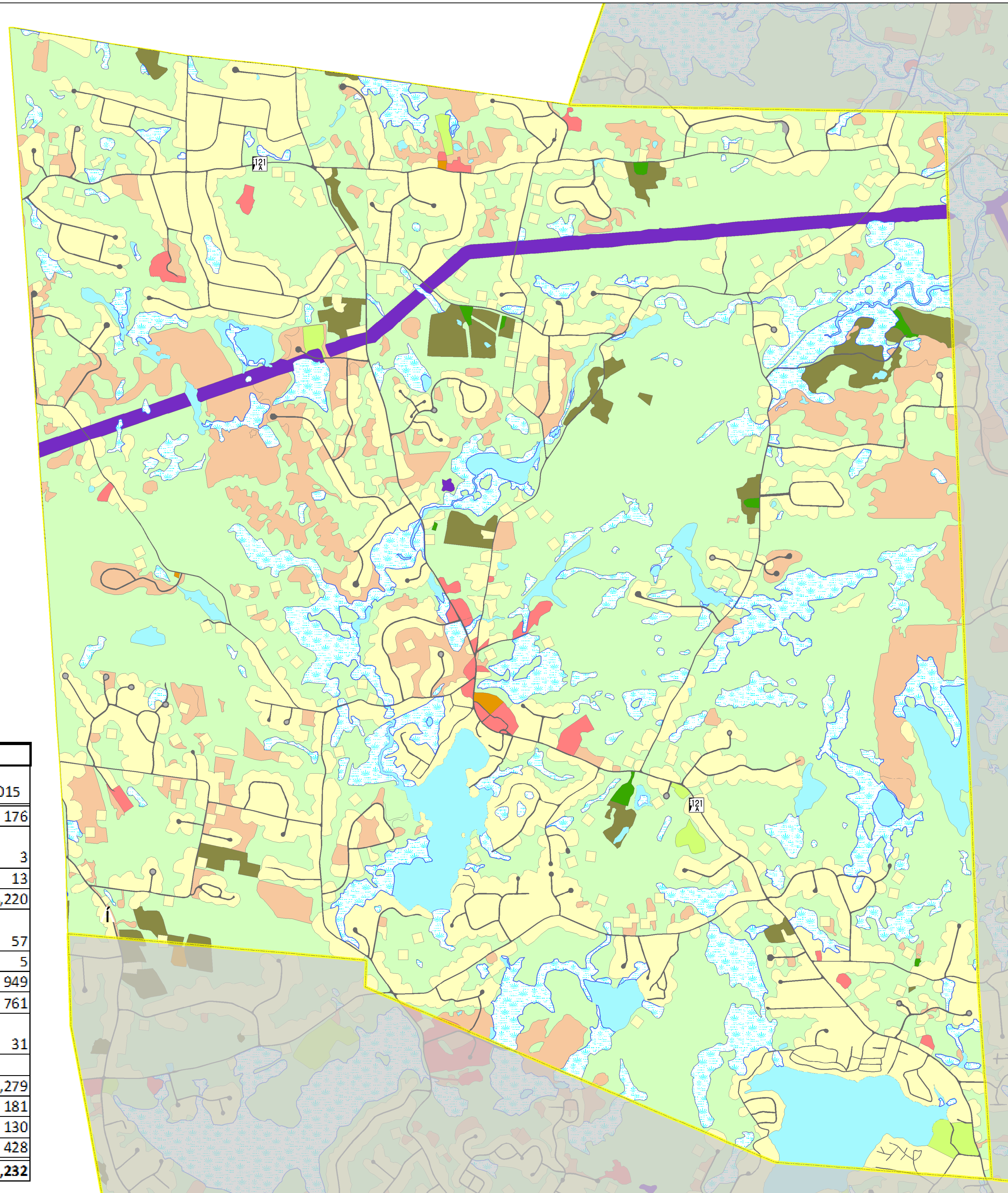
Sandown, New Hampshire

Summer 2020

Landuse 2015

Landuse Description

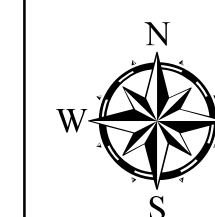
- Active Agricultural
- Aux Transportation
- Farmsteads
- Forested
- Industrial/Commercial
- Mixed Urban
- Open Wetlands
- Other/Idle
- Playing fields / Recreation
- Railroad
- Residential
- Transportation
- Utilities
- Water



Sandown Historical Land Use (Acres)

Landuse Type	1962	1974	1998	2005	2010	2015
Agricultural	473	347	168	180	181	176
Aux Transportation				3	3	3
Farmsteads	26	22	3	8	8	13
Forested	7,528	7,323	6,252	4,531	4,367	4,220
Industrial/Commercial	26	22	33	56	56	57
Mixed Urban			6	5	5	5
Open Wetlands	244	277	188	949	949	949
Other/Idle	217	245	379	694	742	761
Playing fields / Recreation				10	12	31
Railroad						
Residential	311	571	1,687	2,081	2,178	2,279
Transportation	76	89	137	159	175	181
Utilities				130	130	130
Water	330	335	379	427	427	428
Grand Total						9,232

2015 Land Use
2015 land use was created from year 2015 1' resolution, natural color aerial photos supplied by NHDOT. This dataset was created through 'heads-up' digitization of the aerial photos at a recommended scale of 1:2,400 (1"=200'). This was an update to the 2010 Land use update completed by the RPC. These datasets along with the 1962, 1974, 1998, 2005 land use created by GRANIT use a similar method. The method reflects "NH Land Use Mapping Standard CTAP Land Use Mapping Project" from GRANIT March, 2007. This method closely matches the national standard USGS "Anderson level IV" method. While the digitization is done at Level IV, it is symbolized at the level II, thus giving us consistency across the early GRANIT and later RPC datasets.



0 0.25 0.5 1 Miles

