

Budget Committee Annual Report

This year the budget committee met to review and make recommendations to 44 budgets and 15 warrant articles for the voters of Sandown to review at the Deliberative Session. Meetings were held on Wednesday nights at 6:30 pm between October 2021 and January 2022.

Officially, the town's Budget Committee's purpose is "*to assist its voters in the prudent appropriation of public funds.*" This is accomplished by reviewing budget requests for the upcoming year, analyzing revenue, expenditures and trends throughout prior years, and working with department heads towards their goals while ensuring that the budget is affordable. I believe the committee has met this goal to the best of its abilities and hope you will agree.

After the public hearing, **the Budget Committee's 2022 budget proposal is 4,924,225 which is a 6.26% increase over the 2021 budget.** The proposed budget is 290,225 higher than the 2021 budget of 4,634,000. The key drivers in the 2022 budget increase are new town employees and an increase in the highway and recycling budgets, that have been underfunded for the past several years. The hope of the Budget Committee is that these budgets are funded as needed over the next few years.

Funding of the operating budget, which includes the local school district, is accomplished through taxation of property. Allocation of funds raised through taxation in 2021 were as follows:

2021 tax rate per \$1000:

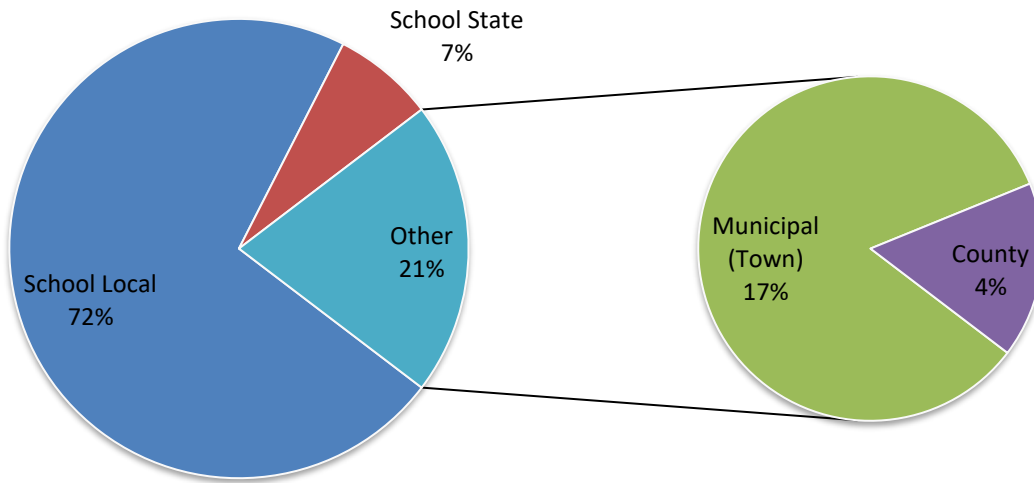
Municipal (town operating):	\$ 5.01	17 %
County:	\$.99	4 %
School:	\$ 20.91	72 %
State:	\$ 2.07	7 %
Total:	\$ 28.98	100 %

It takes many people (department heads, Selectmen, administrative staff, and others) working together to arrive at a fiscally responsible budget proposal. I would like to thank all budget committee members and department heads for working together this year to present a reasonable budget to the voters. The committee would also like to thank Finance Director, Gayle Hamel, Town Administrator Lynne Blaisdell, Cable State Manager Chris Donnellan, and Selectmen's Office Assistant Paula Gulla for their support throughout budget season.

Respectfully submitted,

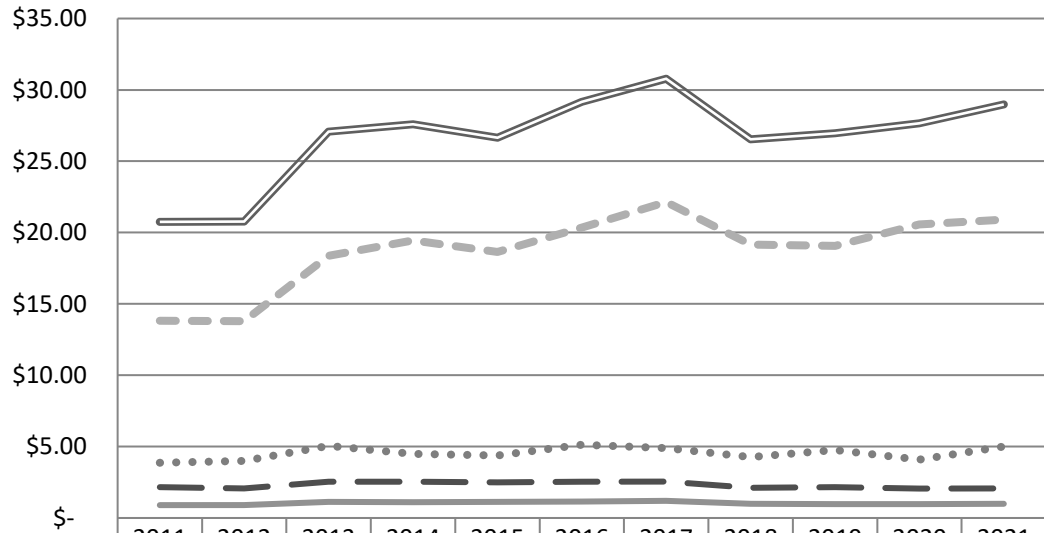
Benjamin Sharpe
Sandown Budget Committee Vice Chair

2021 Tax Rate (\$28.98/Thousand) Breakdown



Per Thousand Cost

Sandown NH Tax rates 2011 - 2021



	2011	2012	2013	2014	2015	2016	2017	2018	2019	2020	2021
— Total Tax Rate	\$20.75	\$20.78	\$27.08	\$27.59	\$26.64	\$29.16	\$30.78	\$26.54	\$26.96	\$27.66	\$28.98
- - - School Local	\$13.81	\$13.79	\$18.37	\$19.45	\$18.65	\$20.34	\$22.14	\$19.16	\$19.07	\$20.56	\$20.91
• • • • • Municipal (Town)	\$3.87	\$4.00	\$5.06	\$4.50	\$4.37	\$5.13	\$4.89	\$4.26	\$4.76	\$4.08	\$5.01
- • - School State	\$2.17	\$2.08	\$2.53	\$2.53	\$2.49	\$2.54	\$2.55	\$2.12	\$2.15	\$2.06	\$2.07
— County	\$0.90	\$0.91	\$1.12	\$1.11	\$1.13	\$1.15	\$1.20	\$1.00	\$0.98	\$0.96	\$0.99

* Town Wide